

Commercial Sexual Exploitation of Children

What is CSEC?

The commercial sexual exploitation of children (CSEC) is the sexual abuse or exploitation of a child, for the financial benefit of any person, or in exchange for anything of value, including monetary and non-monetary benefits. All commercially sexually exploited minors are victims, regardless of the presence of force, fraud, or coercion.



Exploiter

Lloyd, R. & Orman, A. (2010) Training Manual on CSEC: Module 1



Youth: Vulnerable children lured into slavery.

Buyer: People who purchase sex with children.

CSEC includes, but is not limited to:

Child Sex Trafficking

Child Sexual Abuse Material

Child Sex Tourism Involving Commercial Sexual Activity

Online Transmission of Live Video of Child Sexual Abuse

Identifying CSEC

- In possession of clothing, jewelry, or electronics they cannot afford
- Unable or unwilling to give local address or info about caregiver
- Gives scripted or defensive answers, overly protective or vague about their "boyfriend"
- Irregular school attendance, change in grades, inability to concentrate, extreme exhaustion
- Angry, aggressive, or fearful
- Withdrawal from friends/family
- Chronic runaway
- Sudden change in demeanor
- Atypical promiscuous behavior

Sex Trafficking



Hotel keys, rolls of cash, multiple phones, or refillable gift cards



Unexplained Injuries



Sexually provocative clothing, inappropriate for weather or situation



Branding or Tattoos



Unable to make decisions without approval



Claim of older boyfriend or girlfriend

Risk Factors

All children are at risk for CSEC; however, exploiters are master manipulators and engage in purposeful and premeditated targeting of vulnerability.

Prior Sexual Abuse
Foster Care
Runaway/Homeless

- History of abuse
- Undocumented citizenship status
- Family or personal substance abuse
- Unaccepted/rejected LGBTQ+ youth
- Low self-esteem or self-worth
- Physical or developmental disabilities
- Low socio-economic status
- Unstable/unsafe home environment
- Trauma-related mental health issues
- Lack of support system & basic needs
- Gang association or involvement
- Lack of physical or online supervision
- Using words like "Daddy," "The Life," "Trick/Date", "Track/Blade," "Wifey"
- Involvement with foster care, probation, etc.



Pathways of Entry

- Seduction or coercion
- Peer recruitment
- Parents selling their children
- False advertising for employment, including sales, modeling, or acting
- Chat rooms and social media
- Gang-related exploitation
- Kidnapping, violence and force

Recruitment

- Exploiters oftentimes use the following tactics to recruit, groom, and control victims:
- Warmth, affection, gifts, intimacy, & compliments
 - Elaborate promises of a better life, fast \$\$\$, & future luxuries
 - Physical and sexual abuse, with intermittent affection
 - Fear, threats, intimidation



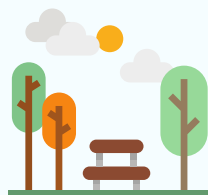
Shopping Centers



Common Recruitment Locations



Public Transportation Systems



Parks



Juvenile Detention Facilities



Gas Stations



After School Activities

How to Report

National Human Trafficking Hotline

Call **1.888.373.7888** or
 text "HELP"
 to BEFREE (233733)

If you have knowledge of, or a suspicion that a child may be a victim of CSEC, please contact the 24-hr.

Placer County Child Welfare Hotline
1.866.293.1940

Information provided in part by :



www.placercoe.org